

Native Plants in the Furneaux Municipality

Plants suitable for use in native gardens



Native Plants

IN THE FURNEAUX MUNICIPALITY

Legend

FORM



Small shrub
Shrubs up to 2.5 m high



Tussock
Clumps or tufts



Climber
Climbing or scrambling



Creeper
Trailing or suckering



Herb
Suitable for cooking

PROPAGATION



Seeds



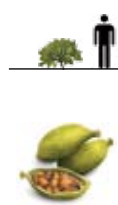
Cutting



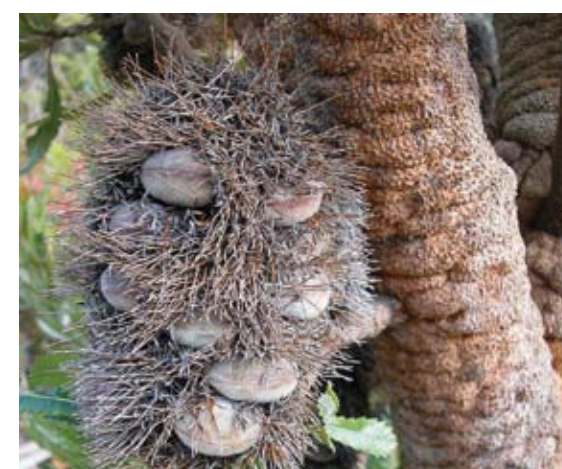
Division



Sweet Wattle *Acacia suaveolens*



Coastal Speargrass *Austrostipa stipoides*



Saw Banksia *Banksia serrata*



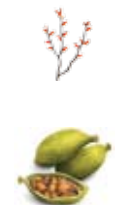
Stinking Boronia *Boronia anemonifolia*



Native Pigface *Carpobrotus rossii*



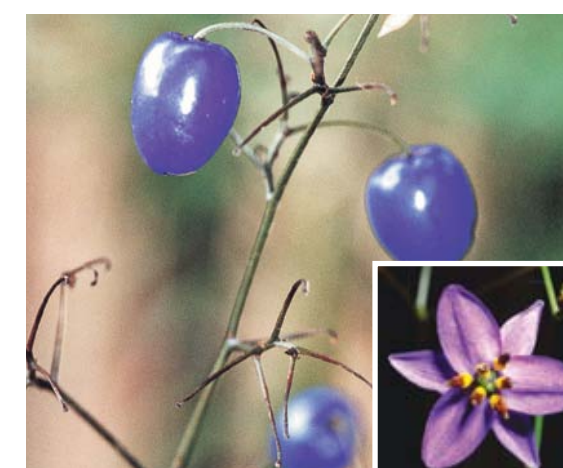
Small Leaf Clematis *Clematis microphylla*



White Correa *Correa alba*



Common Correa *Correa reflexa*



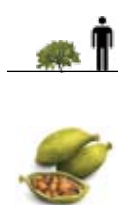
Tasman Flax Lilly *Dianella tasmanica*



Round Leaf Pigface *Disphyma crassifolium*



Native Indigo *Indigofera australis*



Running Postman *Kennedia prostrata*



Cushion Bush *Leucophyta brownii*



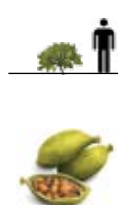
Coast Beard-heath *Leucopogon parviflorus*



Slender Honey Myrtle *Melaleuca gibbosa*



Yellow Bottlebrush *Melaleuca pallida*



Creeping Boobialla *Myoporum parvifolium*



Coast Everlasting Bush *Ozothamnus turbinatus*



Short Purple Flag Iris *Patersonia fragilis*



Coast Pomaderris *Pomaderris oraria*



Twinflower Knawel *Scleranthus biflorus*



Trigger Plant *Stylidium graminifolium*



Mountain Pepper *Tasmannia lanceolata*



Bower Spinach *Tetragonia implexicoma*



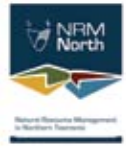
Cliff Everlasting *Xerochrysum papillosum*



Shining Dogwood *Pomaderris paniculosa*



Native Plants in the Furneaux Municipality



More information

Further reading

King Island Flora and Field Guide, (581.994692KIN)
Tasmania's Natural Flora, Australian Plant Society Tasmania Inc 2014
www.understorey-network.org.au
www.utas.edu.au/dicotkey

Native plant nurseries

Tree Action Group Nursery
Whitemark Flinders Island
Plants Of Tasmania Nursery
65 Hall St, Ridgeway, TAS 7054
6239 1583, potn.com.au
Woodlea Nursery
49 Whish-Wilson Rd, Scottsdale 7260
63 527262, woodleanursery.com.au
All these species can be grown from seed collected from mature trees on the island.

Contacts

Flinders Island Tree Action Group
Wayne Warren or Kat Hopkins
0417 377 592.

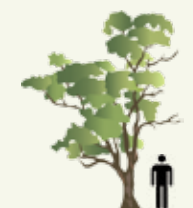
Acknowledgements

Thanks to the project team Vic Epstein and Kat Hopkins, Alison Hugo of NRM North and Chris Cumming from doubleCdesign. Including the contribution of photos from the University of Tasmania, King Island Floral Field Guide, and the Understorey Network.
Grateful thanks to Glamorgan Spring Bay Council and the Shire of Yarra Ranges for allowing us to use the concept and template from their brochures.

Demonstration shelter belt site

Time line 4, Melrose Road, Flinders Island (near ? Showground)

Legend



FORM

Tree

Tree 10 m (meters) or more



Large shrub

Shrubs more than 2.5 m high



Tussock

Plants suitable for use in shelter belts



Coastal Wattle *Acacia longifolia* var *sopharae*



Blackwood *Acacia melanoxylon*



Narrow-leaved Wattle *Acacia mucronata*



Prickly Mimosa *Acacia verticillata*



Drooping Sheoak *Allocasuarina verticillata*



Silver Banksia *Banksia marginata*



Prickly Box *Bursaria spinosa*



Oyster Bay Pine *Callitris rhomboidea*



Hopbush *Dodonaea viscosa*



Tasmanian Blue Gum *Eucalyptus globulus*



Peppermint *Eucalyptus nitida*



Swamp Gum *Eucalyptus ovata*



Cutting Grass *Gahnia grandis*



Coastal Saw-sedge *Gahnia trifida*



Beaked Hakea *Hakea epiglottis*



Needle Bush *Hakea lissosperma*



Yellow Needlebush *Hakea nodosa*



Dagger Hakea *Hakea teretifolia*



White Kunzea *Kunzea ambigua*



Smokey Tea-tree *Leptospermum glaucescens*



Coastal Tea-tree *Leptospermum laevigatum*



Manuka *Leptospermum scoparium*



Bracelet Honey Myrtle *Melaleuca armillaris*



Swamp Paperbark *Melaleuca ericifolia*



Scented Paperbark *Melaleuca squarrosa*

