



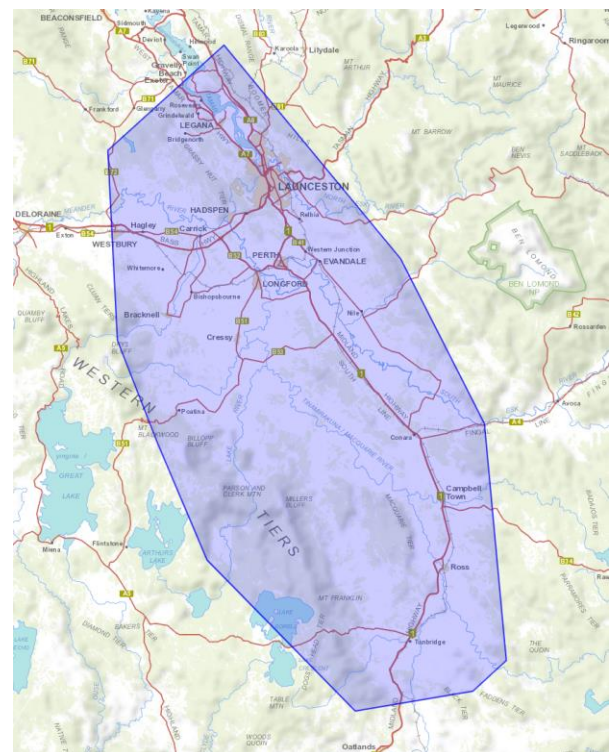
Improving Midlands biodiversity: stewardship and restoration

OUR PROJECT

The Midlands Region of Central Tasmania has been identified as one of 20 Priority Places in the Australian Government’s *Threatened Species Action Plan 2022-2032*, due to its high biodiversity values and conservation significance. It is home to many threatened ecological communities including: Lowland Native Grasslands, Tasmanian Forests and Woodlands dominated by Black (*Eucalyptus ovata*), or Brookers Gum (*Eucalyptus brookeriana*), and threatened grassland flora species including the critically endangered orchids *Paraprasophyllum taphanyx* (graveside leek orchid), *P. incorrectum* (golfers leek orchid), and *P. olidum* (pungent leek orchid).

Colonised by Europeans in the early 1800s and cleared of much of its native vegetation to accommodate agricultural practices, it is believed that the Midlands region has lost more than 70% of its original native vegetation. Historically the landscape was maintained, and managed with fire, by Tasmanian Aboriginals, mostly as open woodland and native grassland.

The conservation values of the area are currently threatened by habitat clearing, fragmentation and degradation, agricultural intensification, invasive weeds, inappropriate fire regimes, and low population numbers for many threatened species of flora and fauna.



Map of central Tasmania showing core project target area (blue polygon).

To address these threats and help secure the future of the region’s priority threatened species and ecological communities, NRM North is partnering with Landscape Recovery Foundation (LRF), Tasmanian Land Conservancy (TLC), and Bush Heritage Australia to expand upon the work of the Midlands Conservation Partnership (MCP).



Australian Government



Midlands Conservation Partnership



This project is jointly funded by the Australian Government under Saving Native Species and the Natural Heritage Trust, and delivered by NRM North, a member of the Commonwealth Regional Delivery Partners panel.

Since its establishment in 2011, the MCP, a joint initiative of TLC and Bush Heritage Australia, has supported farmers to conserve the ecological values of their properties while maintaining viable farming operations.

The NRM North project, running through to June 2028, will support and build on the work of the MCP to protect and enhance ecological values on private land in the Midlands by establishing new conservation stewardship agreements and developing tailored action plans to mitigate threats, enhance land management practices and improve outcomes for threatened species and ecological communities. These plans will be devised both for properties already involved in the MCP and for newly engaged properties in the region.

GET INVOLVED

Funding is available for on-ground remediation works to restore, enhance and reduce threats to threatened ecological communities and threatened species habitat. This includes new livestock fencing, weed control, revegetation and ecological burning. We invite landholders in the Midlands region to participate in the project. Your involvement can make a significant difference in conservation efforts.

Benefits of participation include:

- Contributing to the preservation of threatened ecological communities and threatened species habitat.
- Tailored advice and action plan to guide private conservation efforts.
- Enhancing biodiversity on your land.



Critically endangered orchid species, *Paraprasophyllum incorrectum*. Photo credit: Geoff Curry.

- Increased knowledge of habitat requirements for threatened species of flora and fauna.
- Potential for collaboration with scientists, researchers, and conservationists.
- Recognition of your commitment to environmental stewardship.

MORE INFORMATION?

Express your interest by 24 December 2025. For more information contact NRM North admin: admin@nrmnorth.org.au or 6333 7777.



Australian Government



Midlands
Conservation Partnership



This project is jointly funded by the Australian Government under Saving Native Species and the Natural Heritage Trust, and delivered by NRM North, a member of the Commonwealth Regional Delivery Partners panel.